



---

# **IHS Fekete Software Installation Guide**

## IHS Fekete Software Installation Guide

Last revised: May 30, 2017

© 2017 IHS. No portion of this publication may be reproduced, reused, or otherwise distributed in any form without prior written consent of IHS.

### **TRADEMARKS**

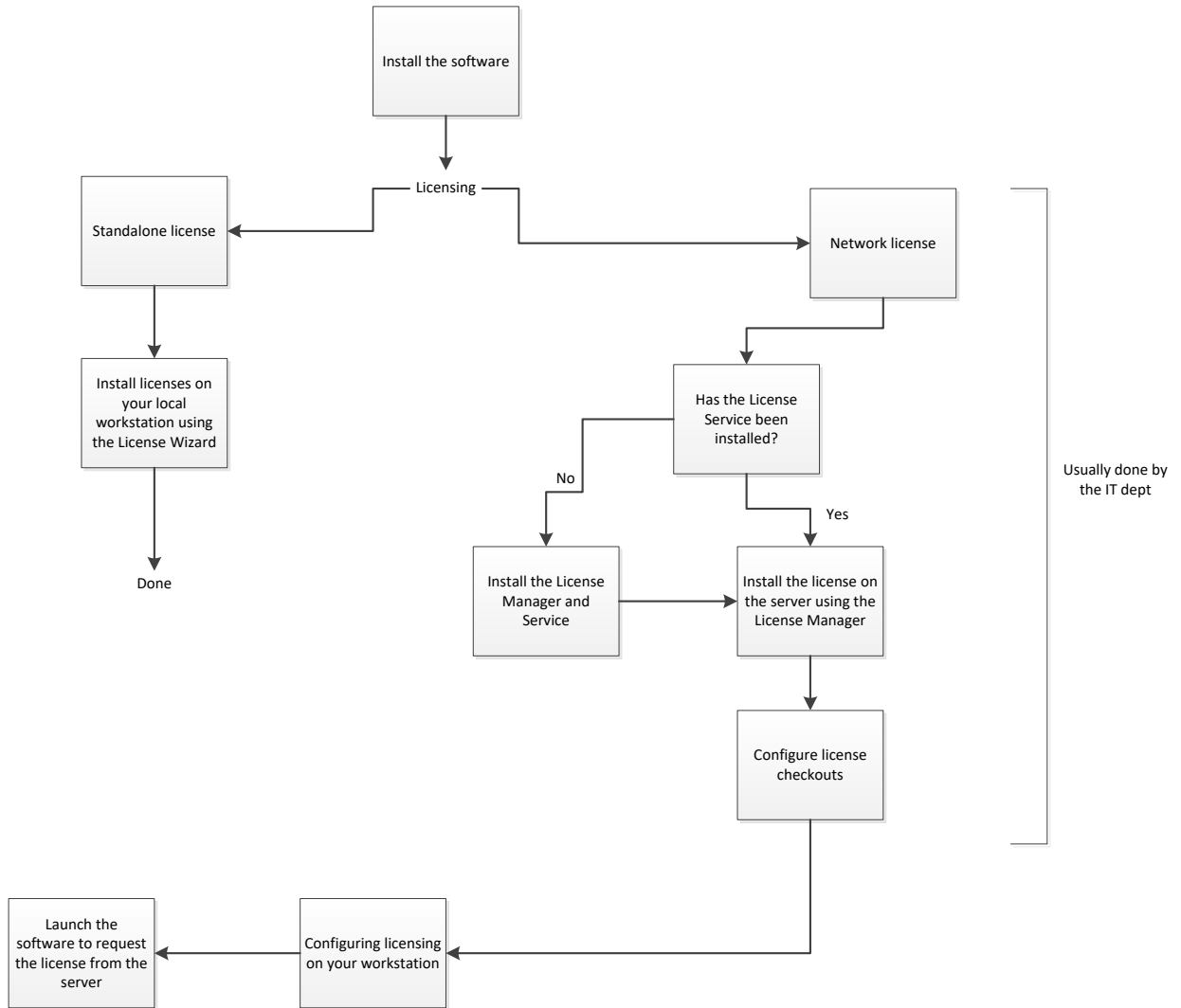
IHS, Harmony, and the IHS globe design are trademarks of IHS. Other trademarks appearing in this publication are the property of IHS or their respective owners.

# Table of Contents

<b>Installation flowchart .....</b>	<b>4</b>
<b>Install the software.....</b>	<b>5</b>
<b>Licensing.....</b>	<b>9</b>
Standalone licensing.....	9
Network licensing.....	11
Configuring licensing on your workstation (for network licensing).....	21
Configuring checkouts on a server .....	22
Checking out licenses on your workstation .....	25

# Installation flowchart

This flowchart provides a high-level workflow for installing IHS Fekete software.



## Install the software

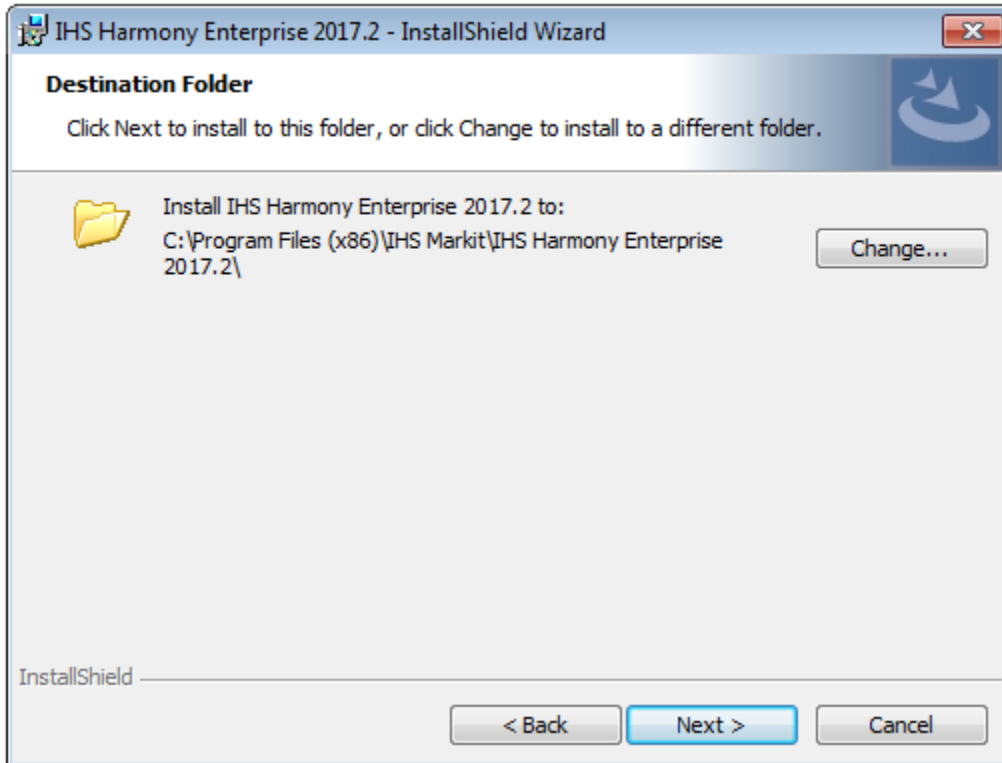
IHS Harmony is used as an example below. However, the procedure is similar for other IHS Fekete software.

To install IHS Fekete software on your workstation:

1. Launch the installer and click **Next**.

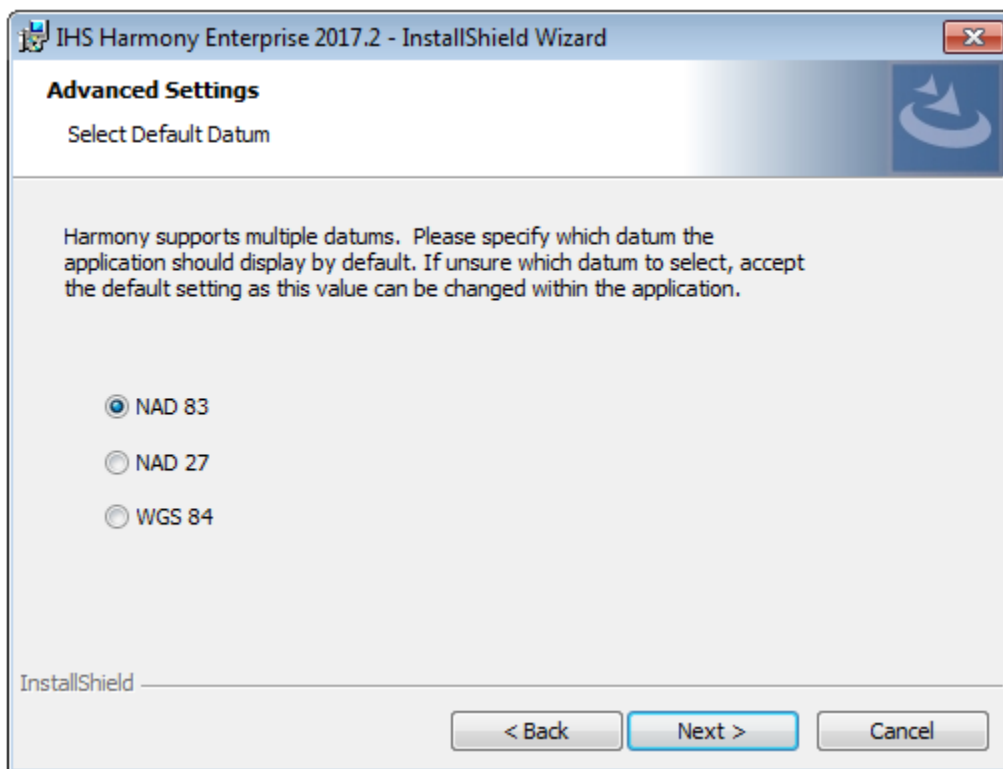


2. We recommend that you install the software to the default path and click **Next**.

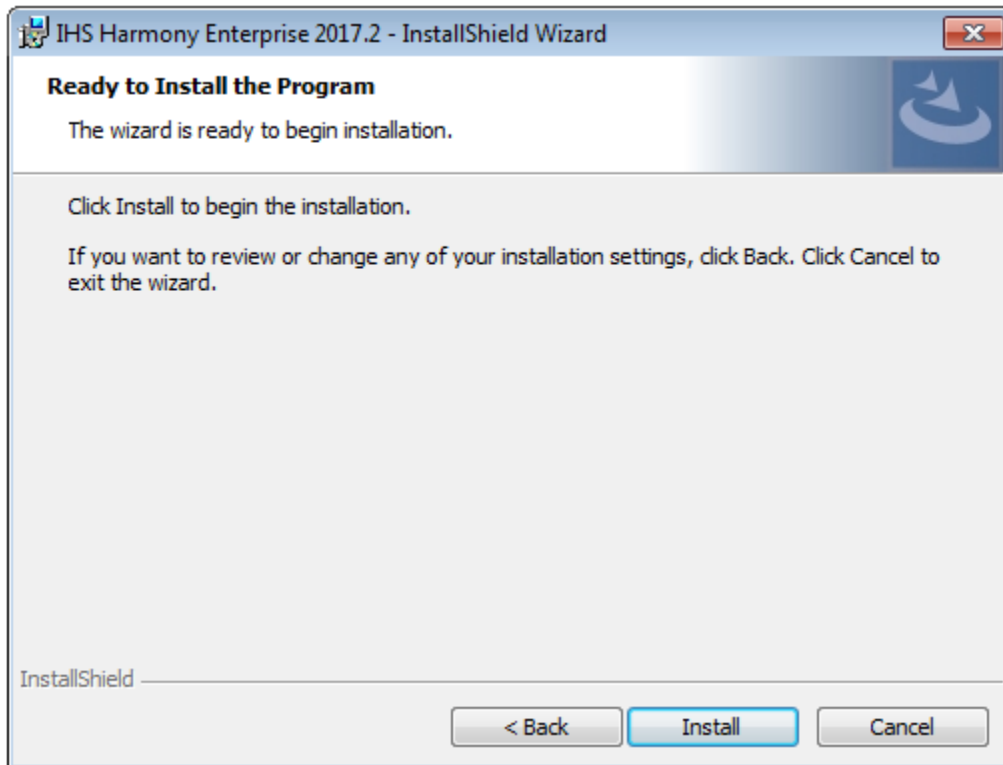


If you prefer to install to a different location, click **Change** and browse to an alternate directory.

3. Select the datum most relevant to the location you are working with. (This can be changed within Harmony at a later date.)



4. Click **Install** to begin the installation.



5. Click **Finish** to complete the installation.



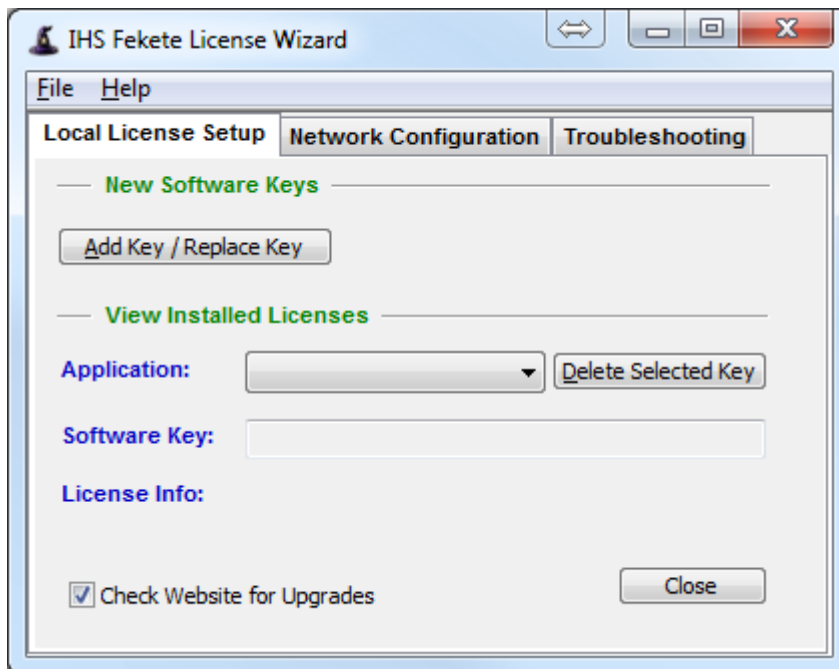
# Licensing

There are two licensing modes: standalone (individually managed) and network (centrally managed).

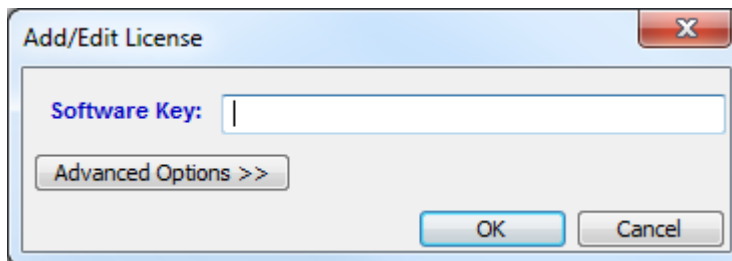
## Standalone licensing

To install standalone licensing on your local workstation:

1. Open the License Wizard from either the IHS Fekete software folder on your Desktop, or from the Start menu.
2. Click the **Local License Setup** tab and click the **Add Key / Replace Key** button.

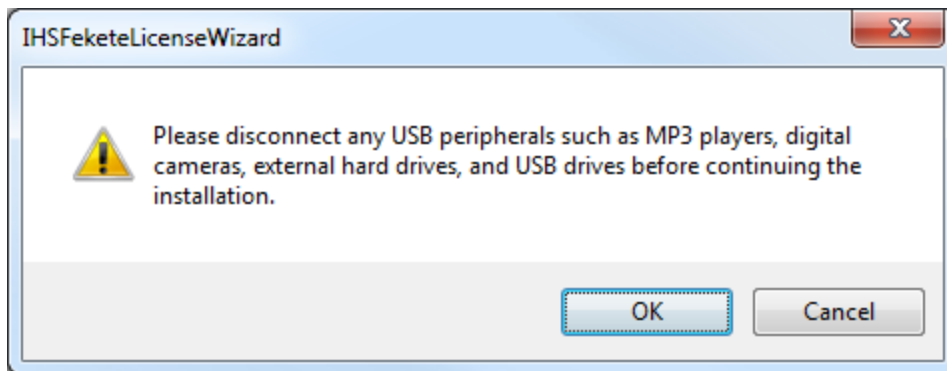


3. Type or paste your license key in the Software Key field and click **OK**.

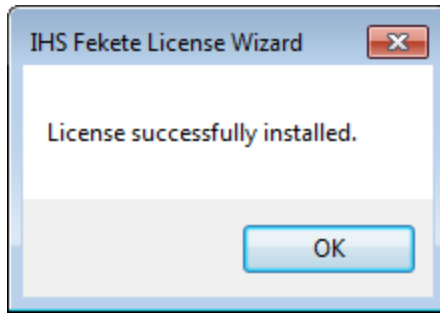


**Note:** Software keys are emailed to users.

4. You are prompted to disconnect any external hard drives before continuing with the installation. Click **OK** when you are done.



When you see the following dialog box, your license is successfully installed. Click **OK**.



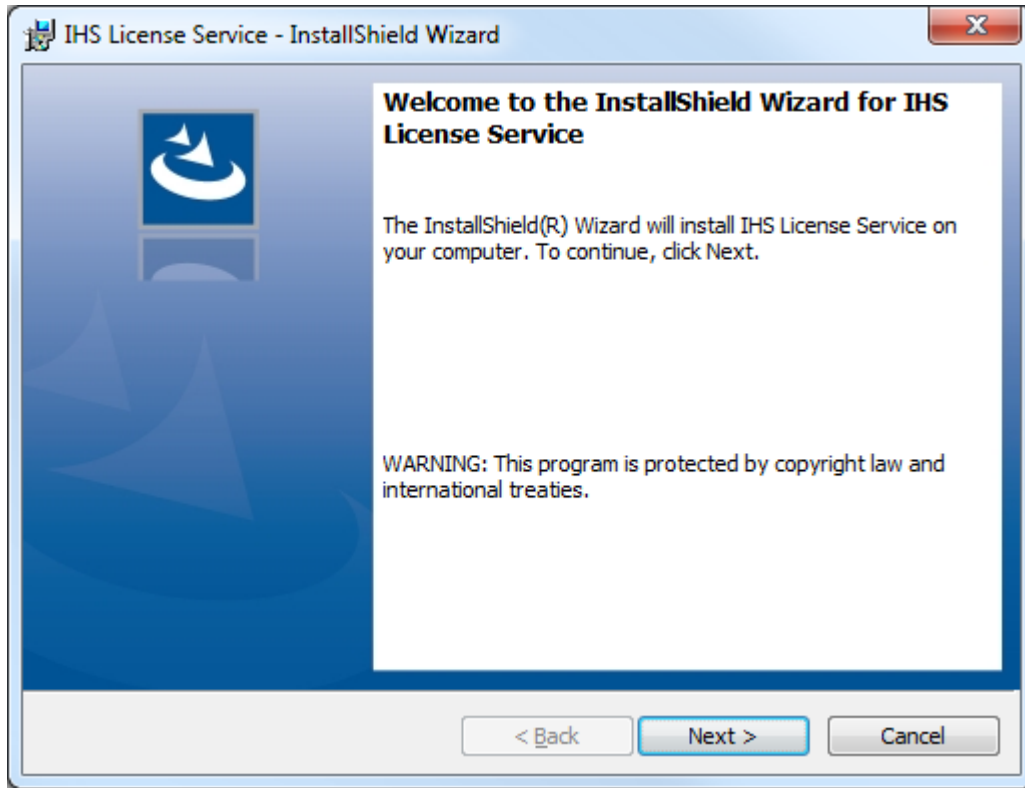
5. Repeat this process for other IHS Fekete software you need to activate.

## Network licensing

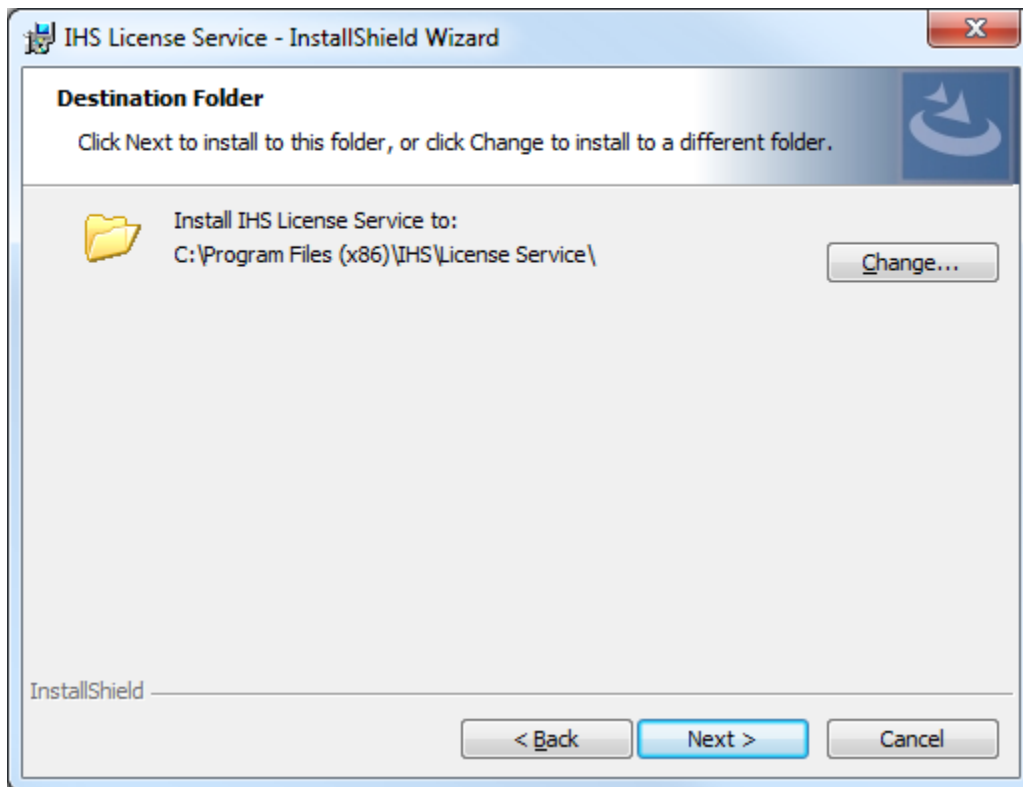
To use network licensing, the License Service must be installed (steps 1-4 of the procedure below), preferably on a separate machine on your network. The License Manager must also be installed and can be installed on any machine (steps 5-8). The License Service should only be installed on one machine, and it does not need to be installed on the same machine as the software.

To install network licensing:

1. Launch the installer for the IHS Fekete License Service and click **Next**.

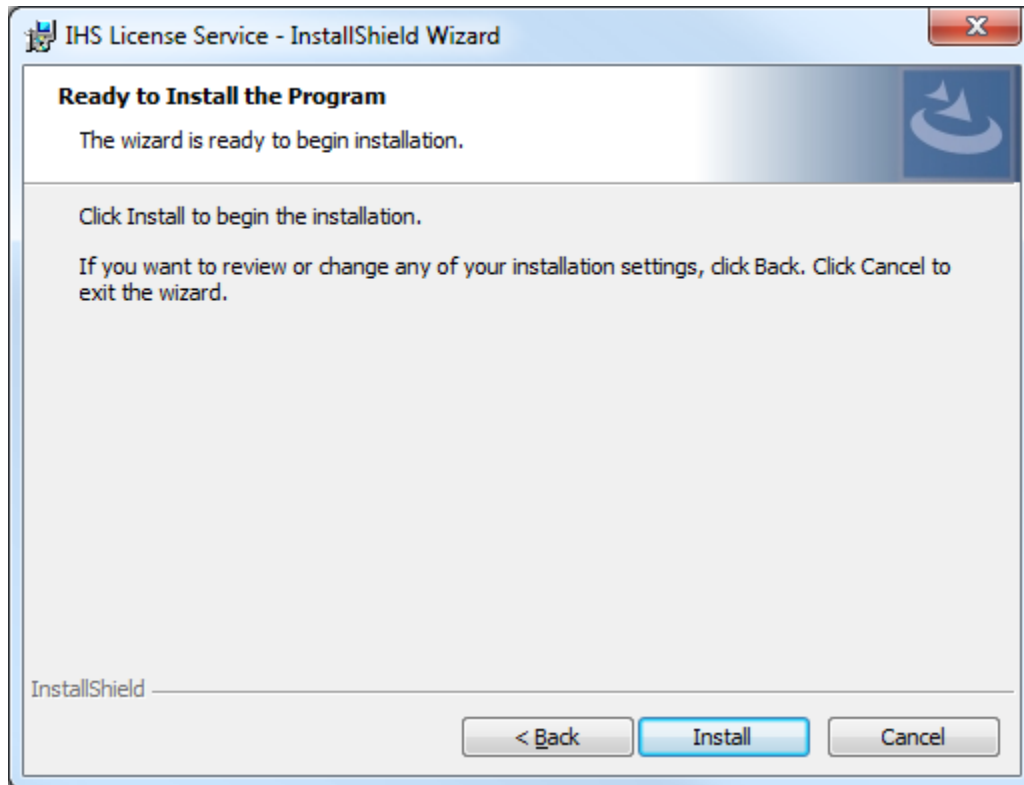


2. We recommend that you install the software to the default path and click **Next**.

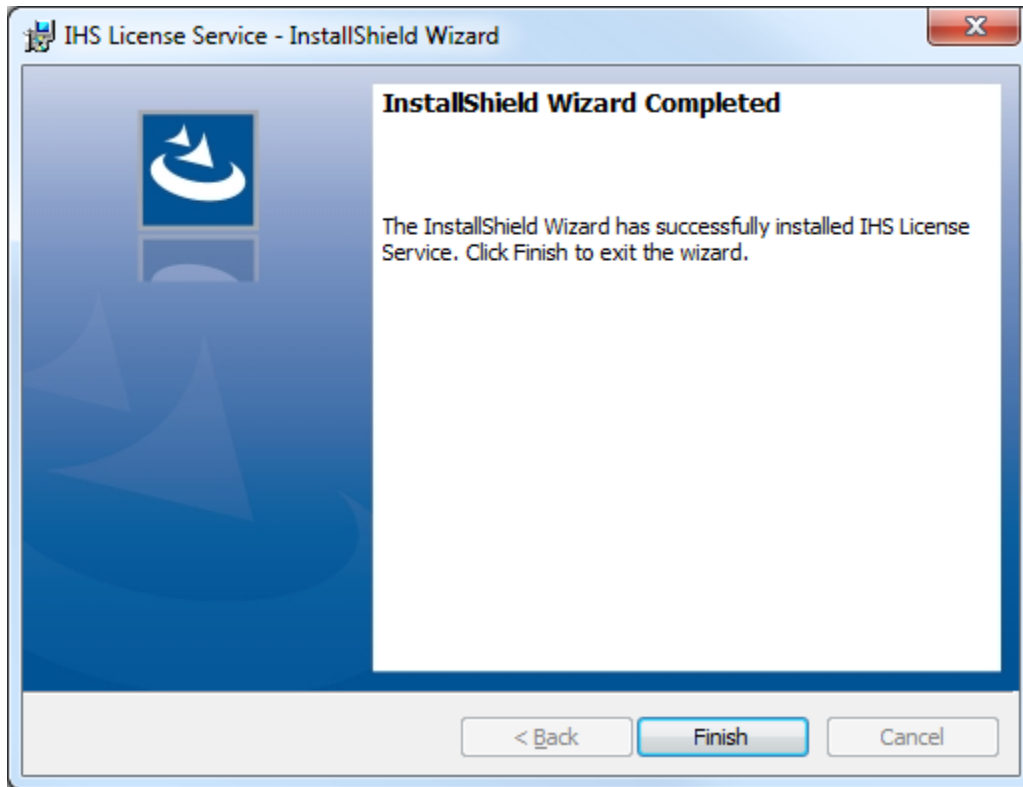


If you prefer to install to a different location, click **Change** and browse to an alternate directory.

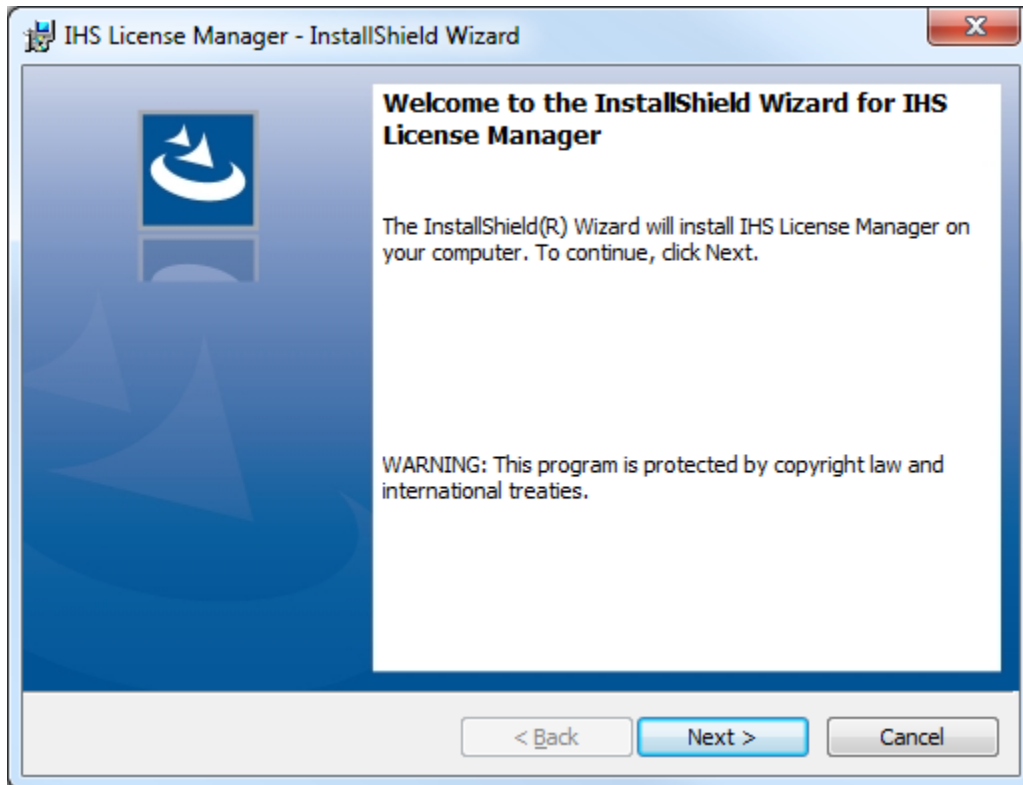
3. Click **Install**.



4. Click **Finish** to complete the installation of the License Service.

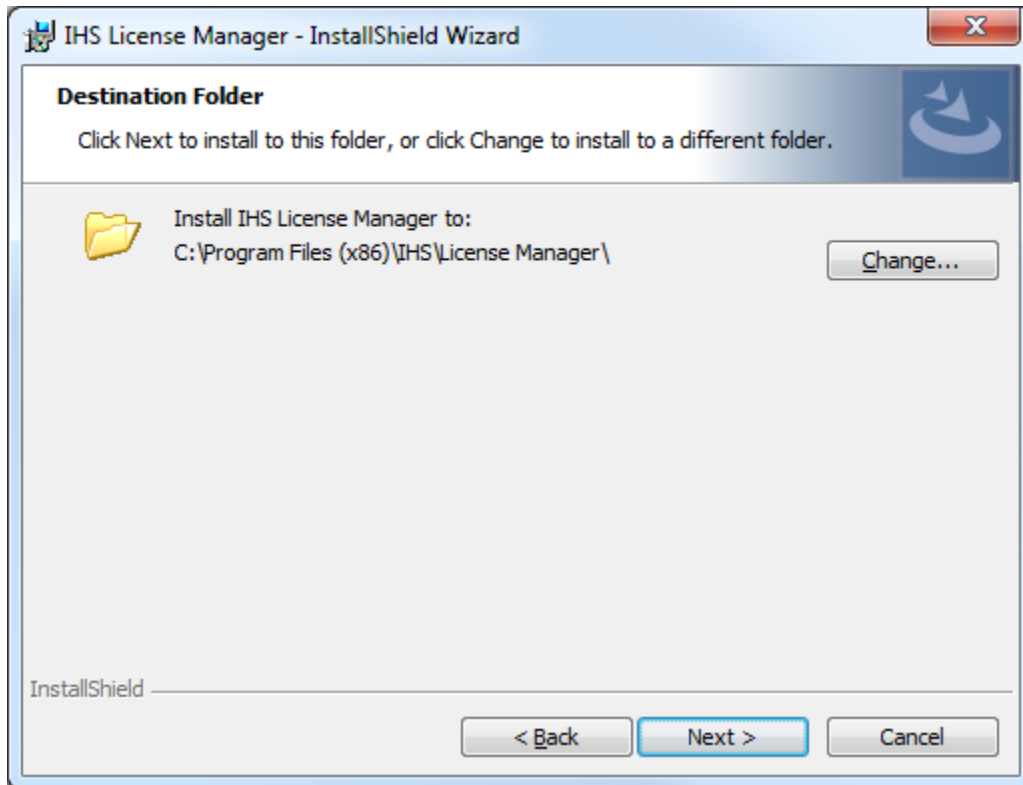


5. Launch the installer for the IHS Fekete License Manager and click **Next**.



The License Manager can be installed on any machine that is able to connect to the server with the License Service.

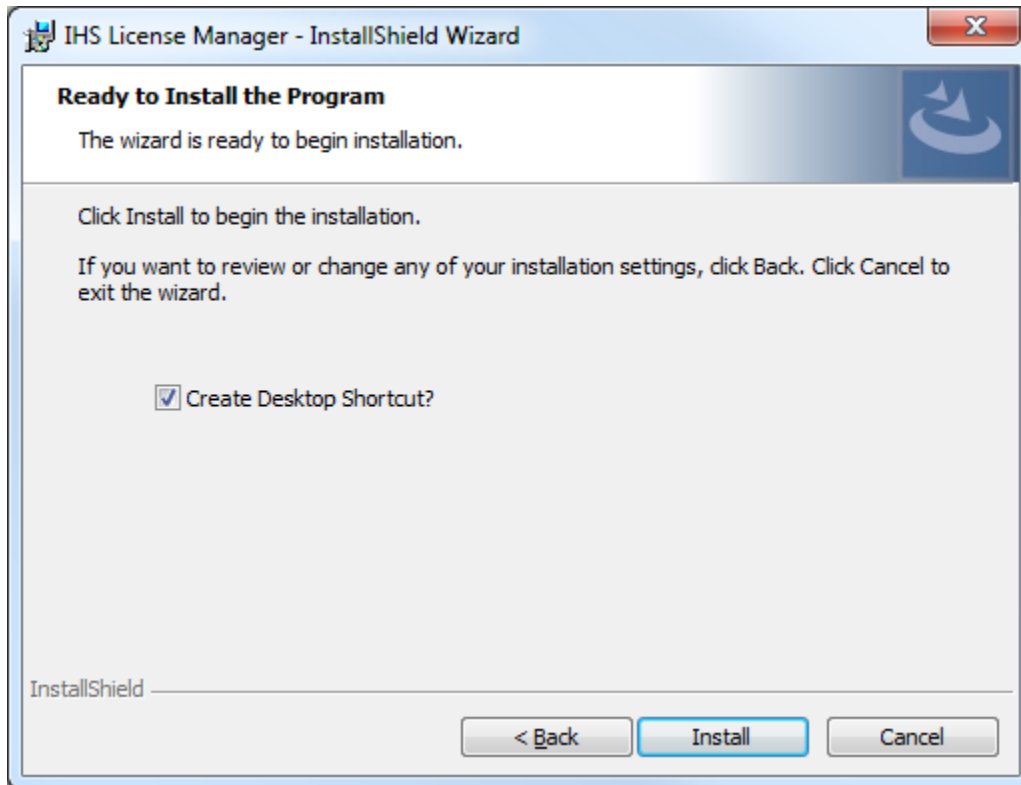
6. We recommend that you install the software to the default path and click **Next**.



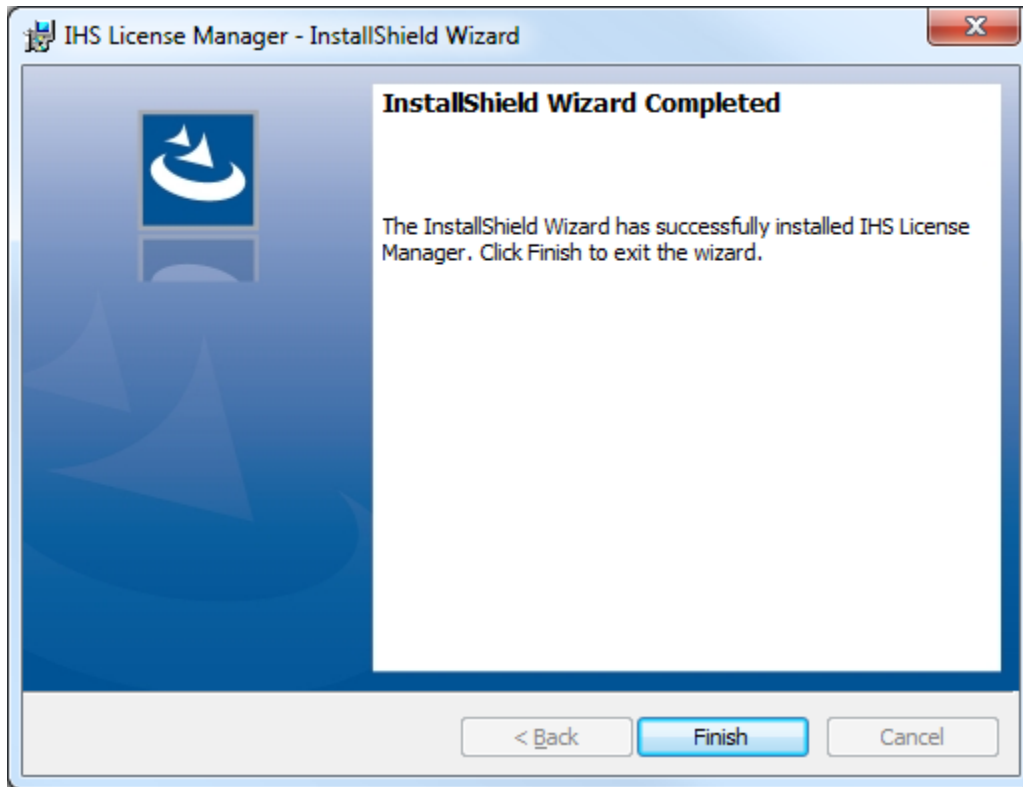
If you prefer to install to a different location, click **Change** and browse to an alternate directory.



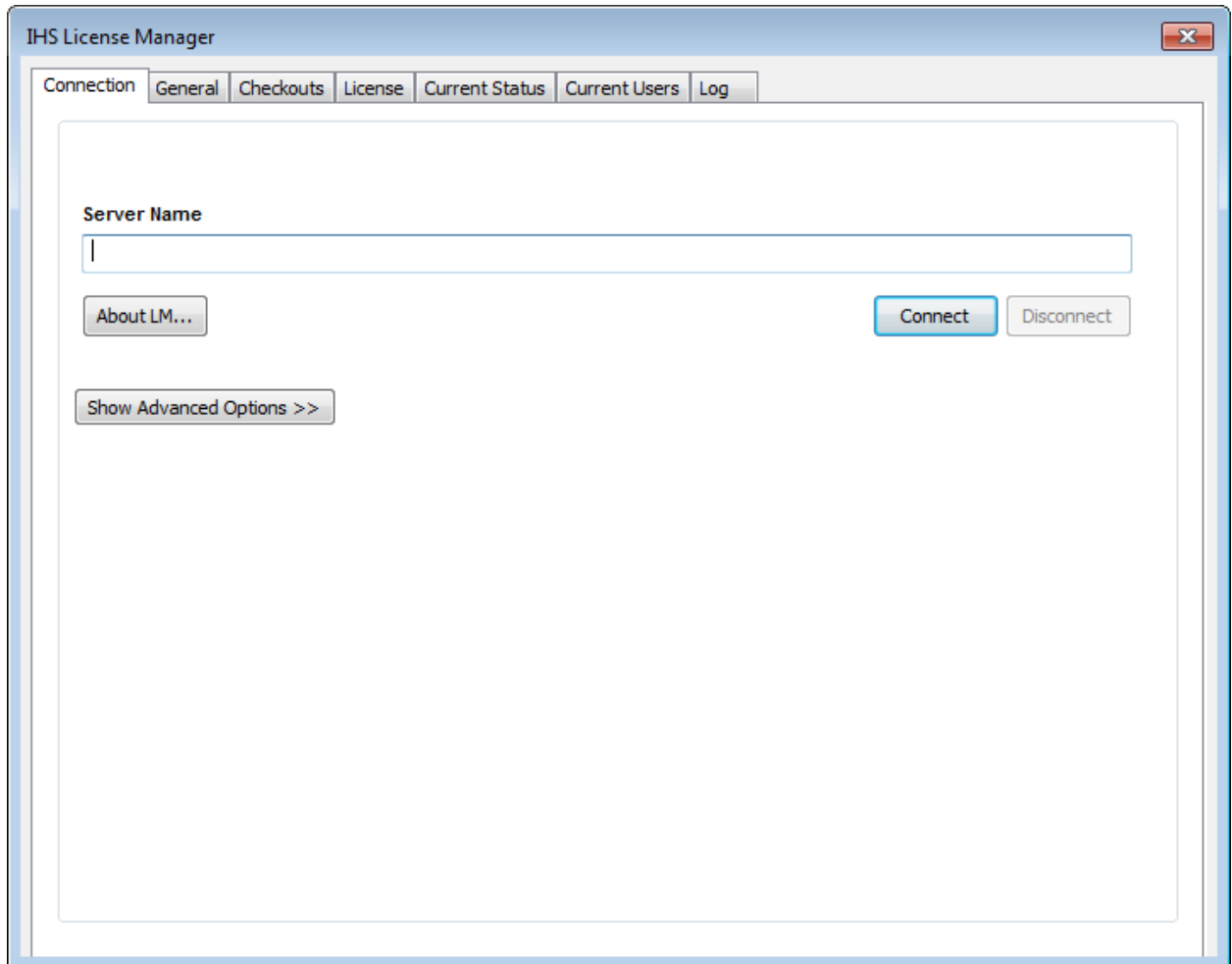
7. We recommend that you keep the Create Desktop Shortcut checkbox selected and click **Install**.



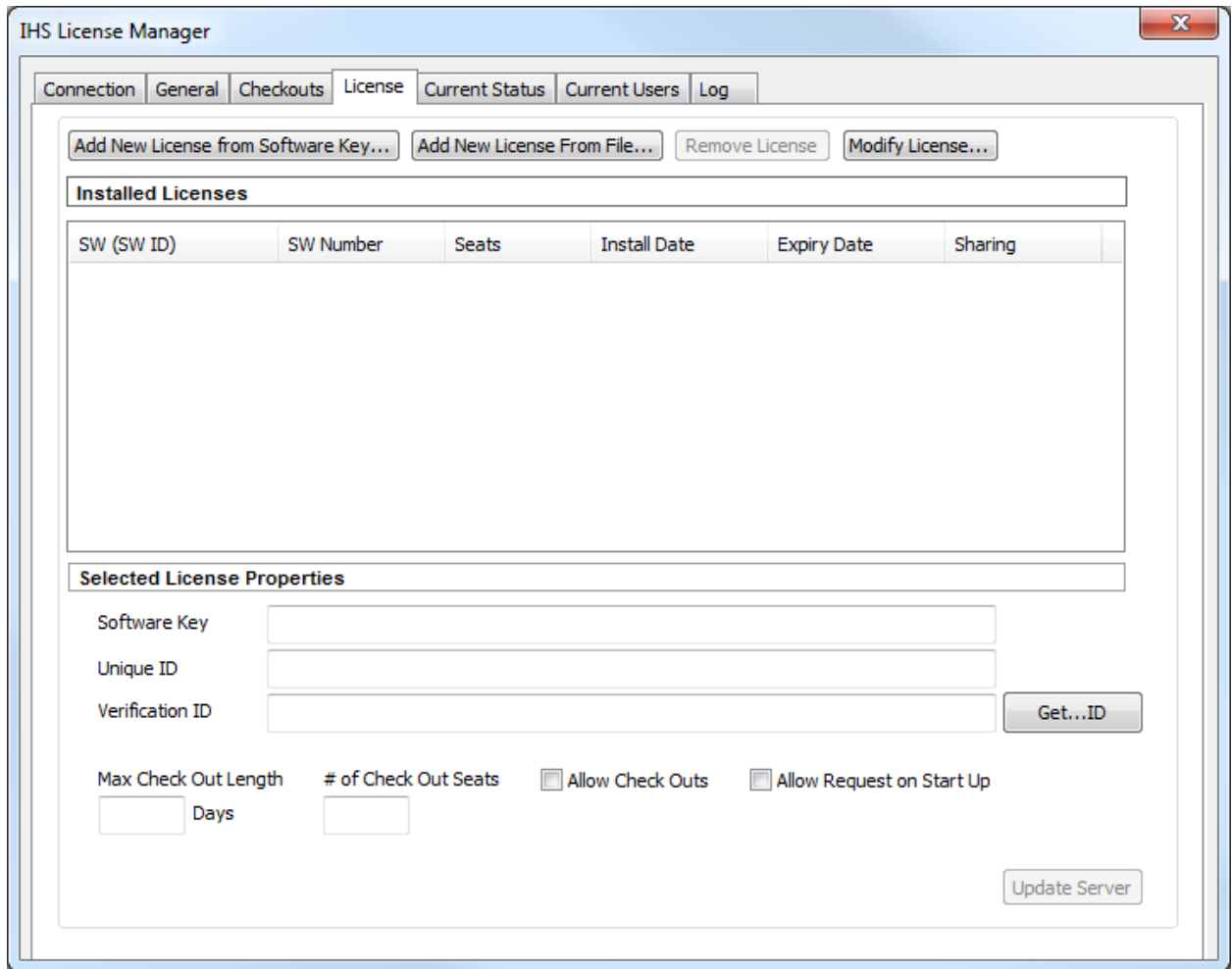
8. Click **Finish** to complete the installation of the License Manager.



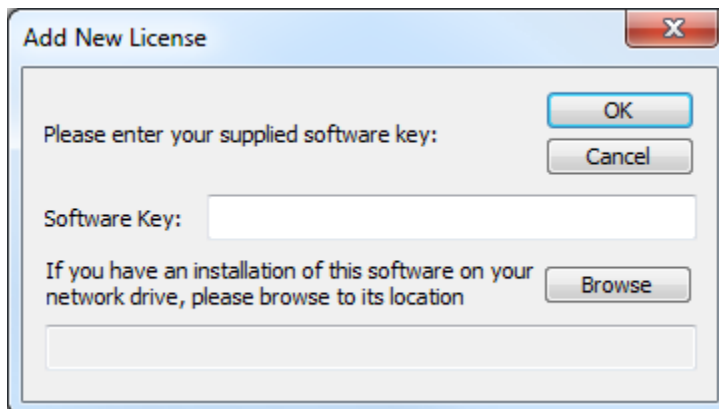
9. Open the License Manager, enter the Server Name and click **Connect**. (The Server Name is the name of the machine running the License Service.) After you are connected, the Connect button will be greyed-out.



10. Click the **License** tab, and then click the **Add New License from Software Key** button.



11. Type or paste your license in the Software Key field and click **OK**.



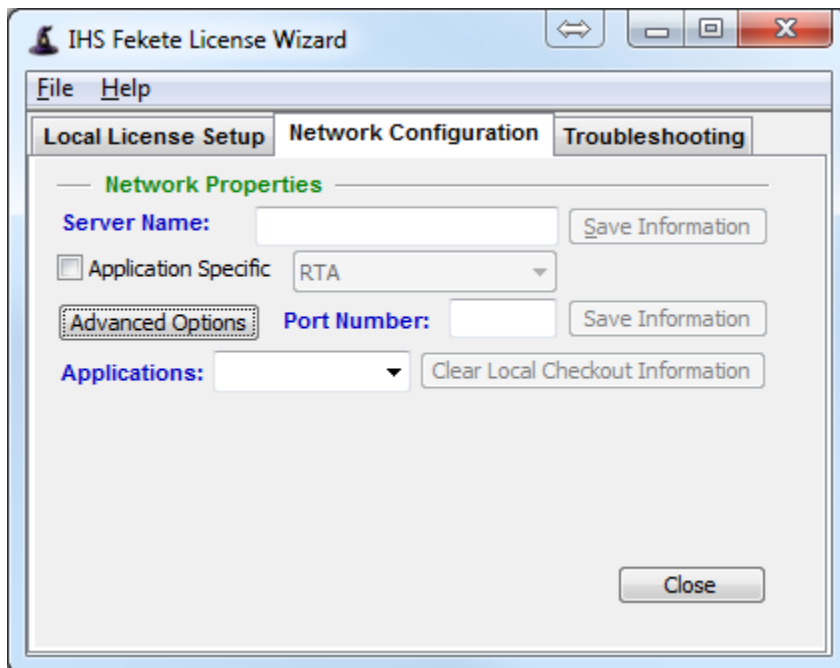
The License Manager displays a success message and completes the verification process.

**Note:** Automatic verification only works with License Manager 2.11.11.0 and later. Earlier versions require manual verification.

## Configuring licensing on your workstation (for network licensing)

To configure licensing on your local workstation:

1. Open the License Wizard from either the IHS Fekete software folder on the Desktop, or from the Start menu.
2. Click the **Network Configuration** tab and type the name of the machine running the License Service (or the IP address) in the Server Name field. The default port for the License Service is **87**. If you specified another port during your License Manager configuration, you need to enter that port number as well.



3. Click the **Save Information** button and click **Close**.

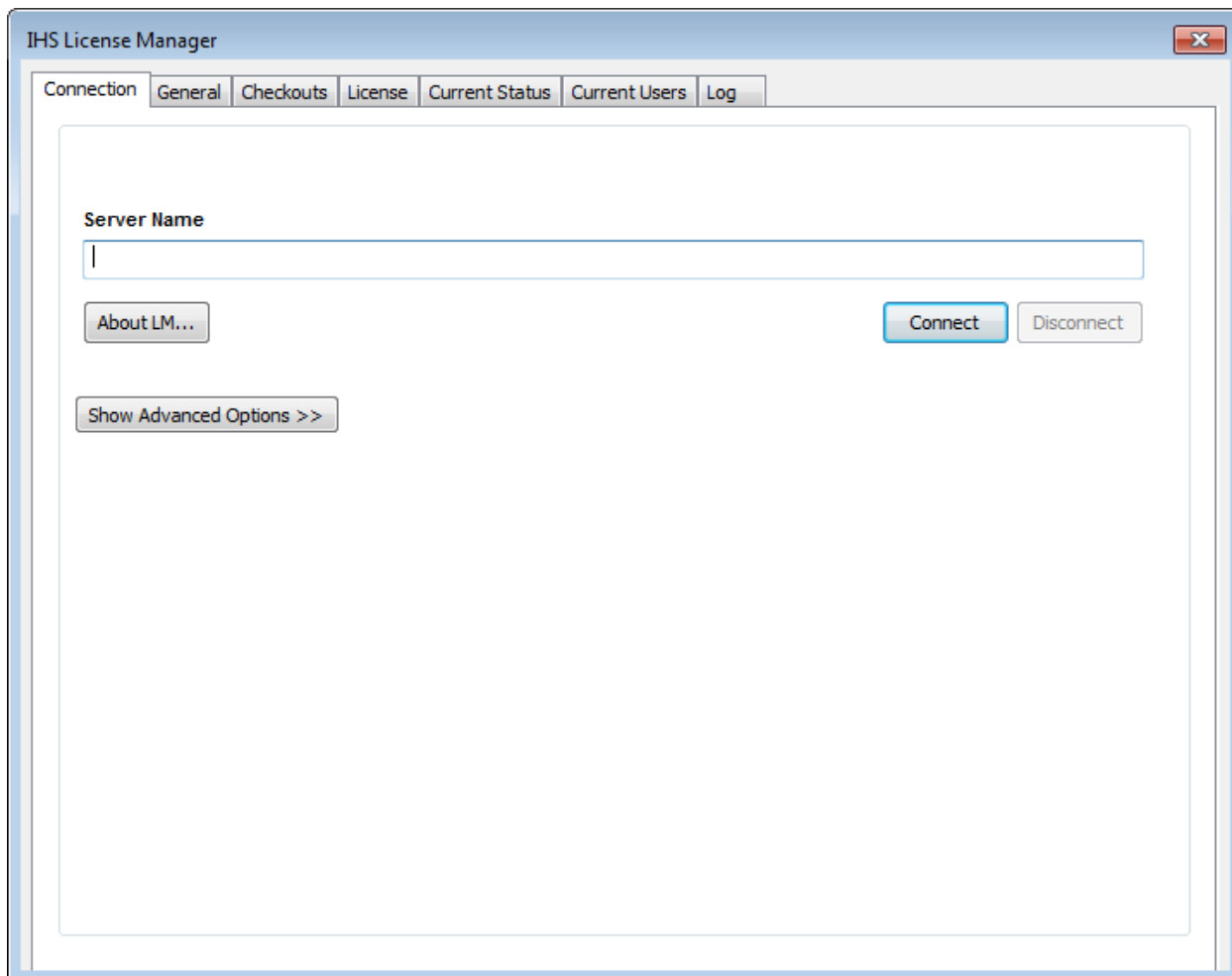
The software is ready for use.

## Configuring checkouts on a server

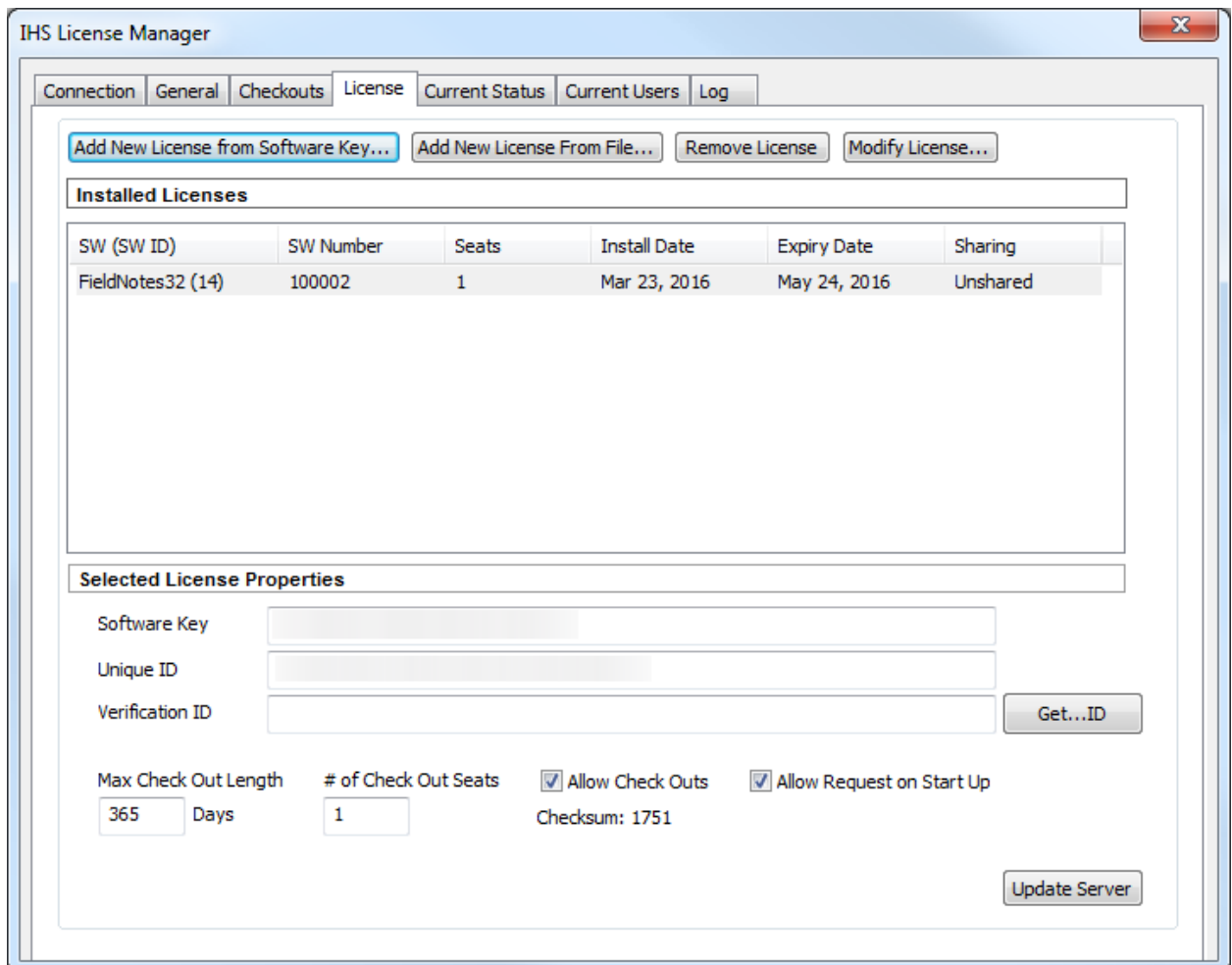
Checkouts are used to secure a license on the server for your individual use. When using the License Server, you can check out a license, which enables you to use the software while disconnected from the network. (This may be useful when you are travelling.) To use this feature, you must enable checkouts in the License Manager by following the procedure below.

To configure license checkout on a server:

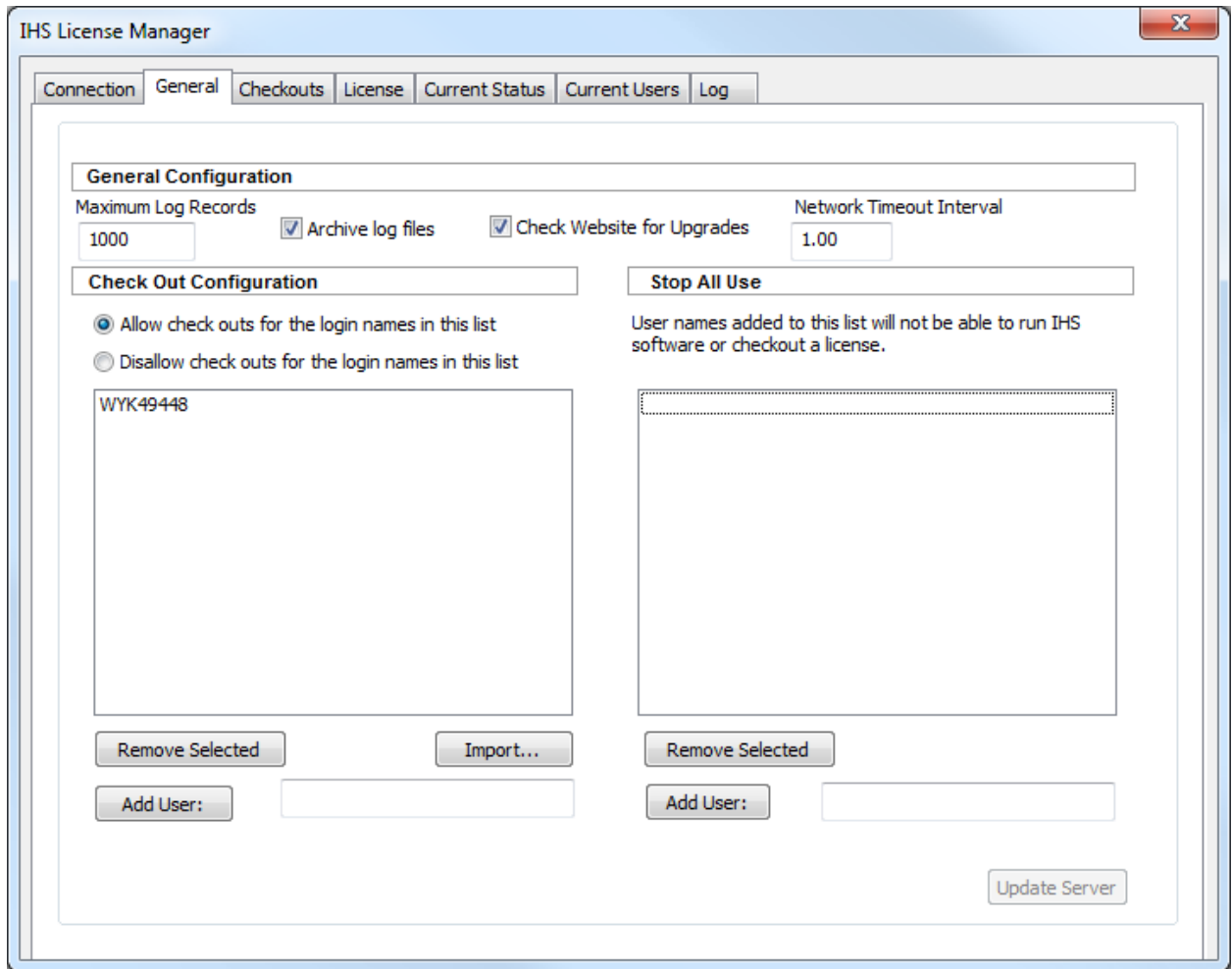
1. Open the License Manager and on the Connection tab, click **Connect**. (Note that a greyed-out Connect button confirms a successful connection.)



- Click the **License** tab, select the license name, and ensure that the **Allow Check Outs** checkbox is selected. Repeat for all applicable licenses. Click the **Update Server** button.



3. Click the **General** tab.



4. Select one of these options:
  - **Allow check outs for the login names in this list** — specify the users that can check out a license from the server by clicking the **Add User** button. Type the usernames for the users that are granted access. Only the users that are entered in this list can check out a license.
  - **Disallow check outs for the login names in this list** — if there are no names in this list, any user can check out a license on their local workstation.
5. Click the **Update Server** button.

This completes the server-side setup for checking out licenses.



## Checking out licenses on your workstation

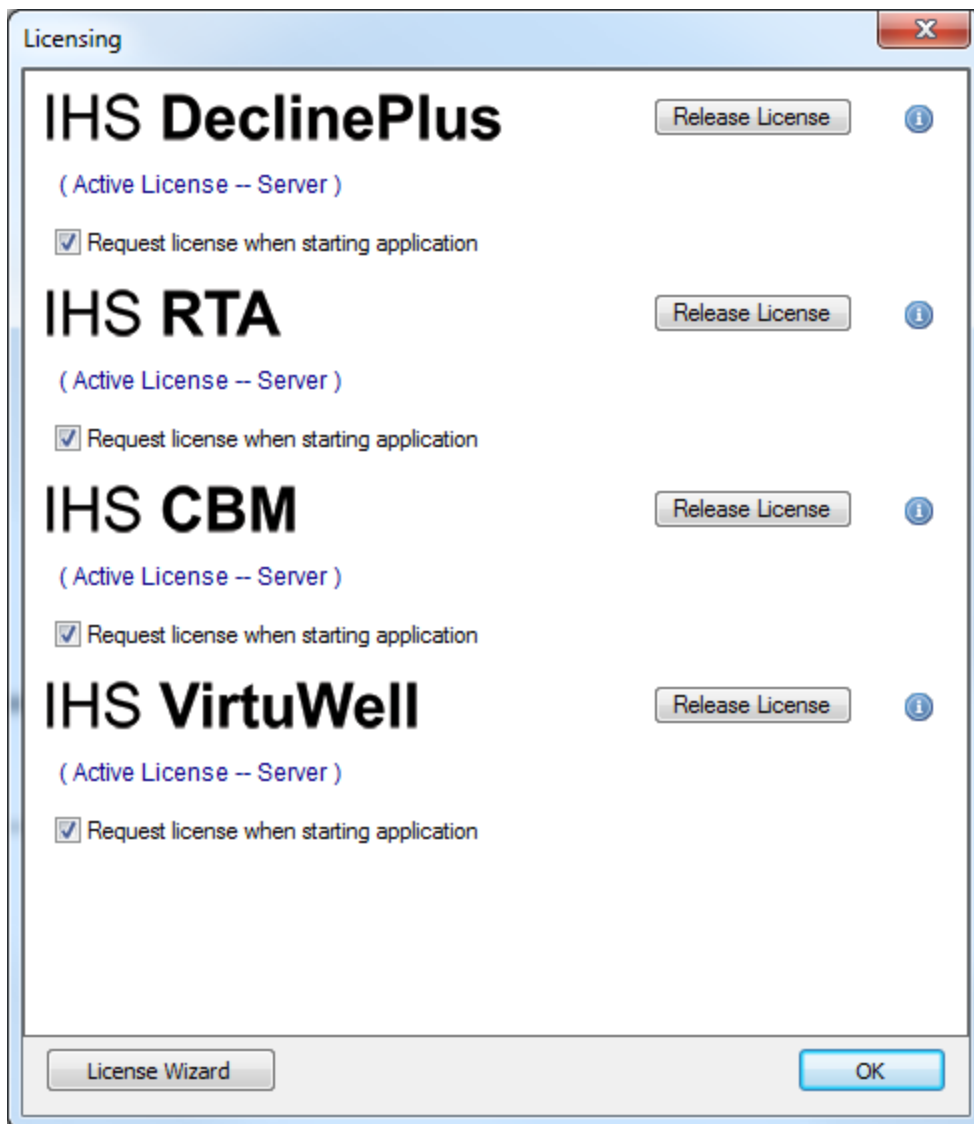
IHS Harmony is used as an example below. However, the procedure is similar for other IHS Fekete software.

To check out licenses on your local workstation:

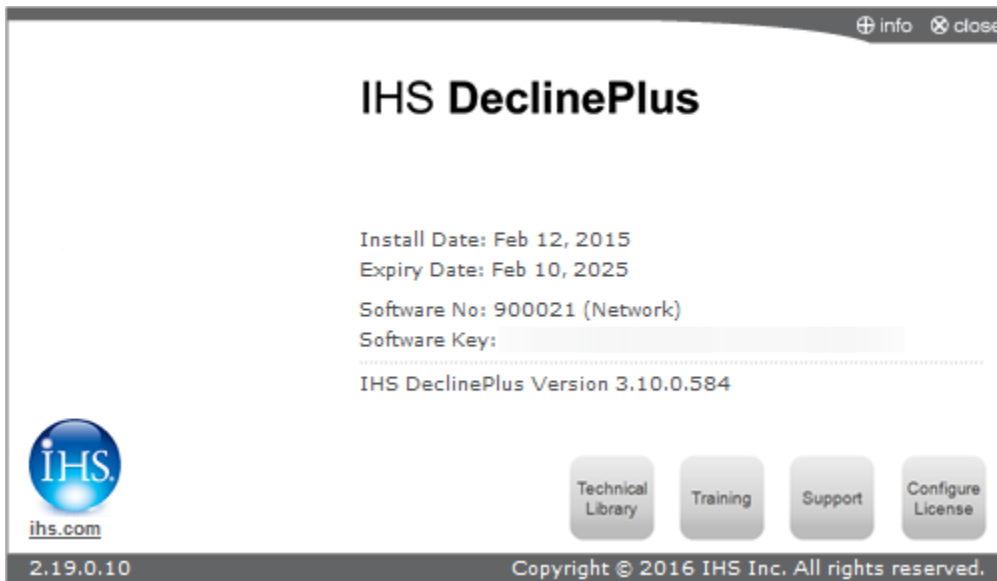
1. Launch Harmony, and click one of the four icons to the right of the Harmony logo:



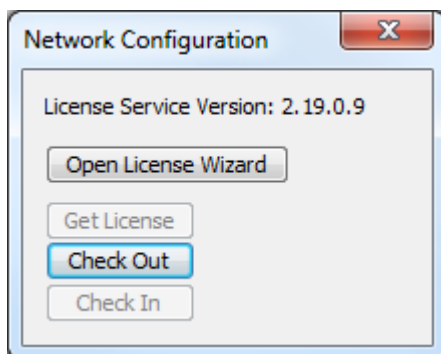
2. Click the blue 'i' icon on the right-side of the Licensing dialog box.



3. Click the **Configure License** button.



4. In the Network Configuration dialog box, click **Check Out**. This takes a license from the server and keeps it on the local workstation. This is useful when you work offline. Note that this removes an available license from the server until you check the license back in.



5. To return the license to the server, click **Check In**.  
This completes the configuration of checkouts on your local workstation.