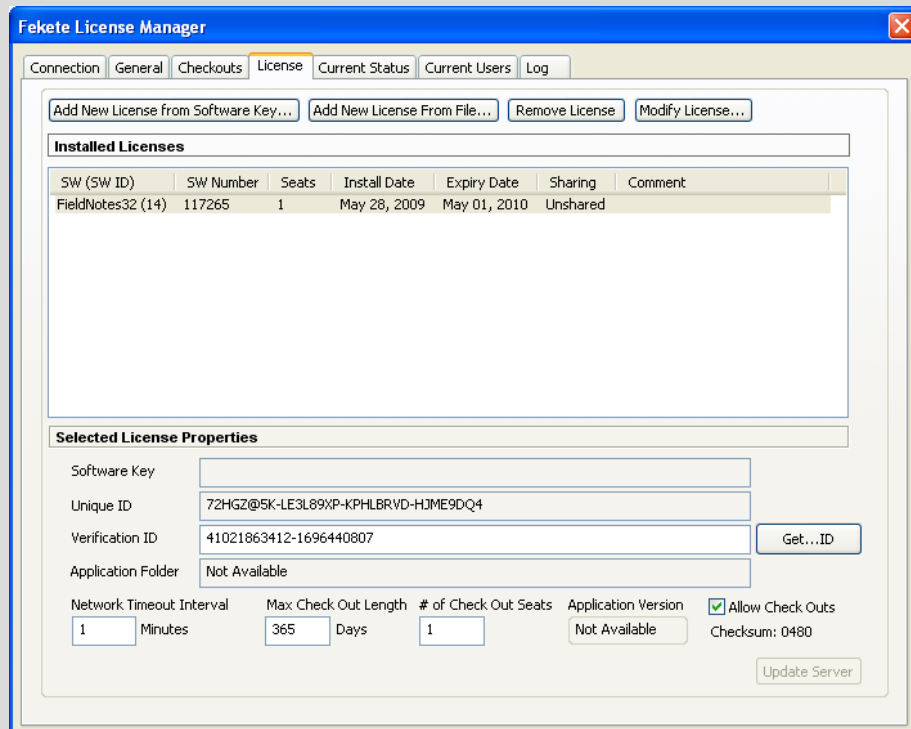


STEP 1

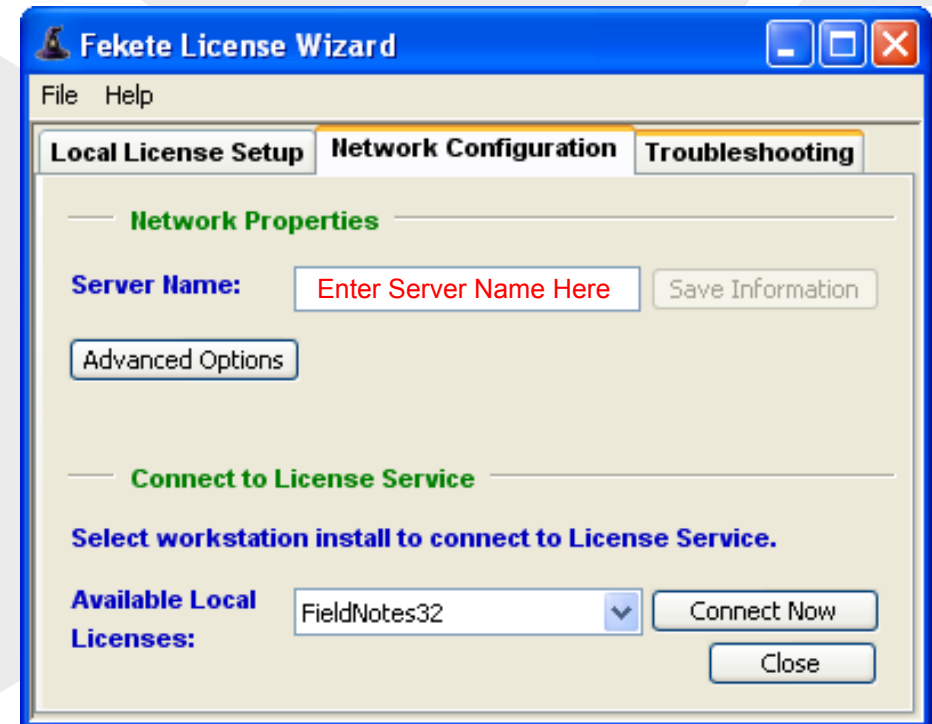
License Server Installation



1. Install License Service.
2. Install License Manager.
3. Use License Manager to install Network Licenses.
4. Click on the Add New License from Software Key button.
5. Enter in the Software Key supplied to you.

STEP 2

Workstation Installation



1. Install FAST Software on each workstation.
2. Run the Fekete License Wizard on each workstation.
3. Click on the Network Configuration tab, enter in the Server name or IP Address and click on the Save Information button.